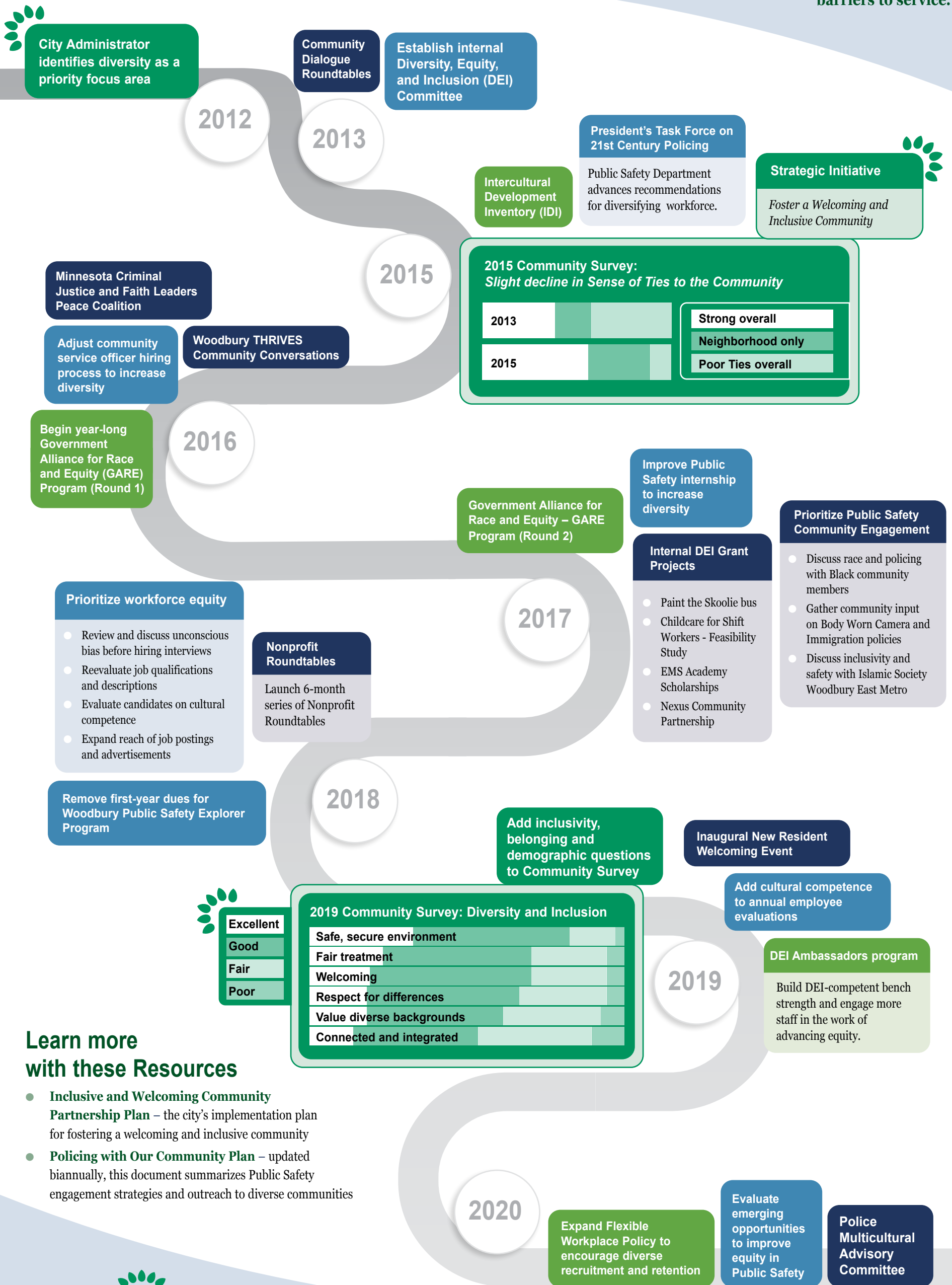


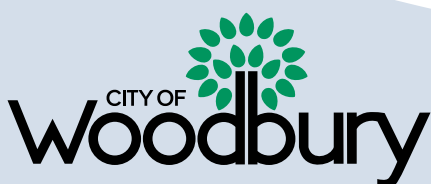
Racial Diversity, Equity and Inclusion in Woodbury

In order to be a leading community where everyone has the opportunity to thrive, Woodbury works to hire, train and develop staff with the necessary skills to recognize disparities and critically examine barriers to service.



Learn more with these Resources

- Inclusive and Welcoming Community Partnership Plan** – the city's implementation plan for fostering a welcoming and inclusive community
- Policing with Our Community Plan** – updated biannually, this document summarizes Public Safety engagement strategies and outreach to diverse communities



Training and Education • Workforce Equity • Community Engagement